

INSTRUCTIONS FOR USE



Water Proof
Dressing



Conforms
to Body



Highly
Absorbent

INDICATIONS

SurgiFlex Si dressings are indicated for use as primary dressings in the management of all types of superficial wounds with light to moderate to heavy exudate production, such as:

- Surgical wounds
- Skin tears
- Partial thickness burns
- Pressure injuries
- Arterial ulcers
- Venous leg ulcers
- Diabetic ulcers

or as a secondary dressing with other wound contact products, where exposure to conventional adhesive fixation is undesirable.

CONTRAINDICATIONS

- Should not be used if allergies to any of its components is known.

GENERAL INFORMATION

- If infection is present, a primary wound cleansing dressing e.g. Osmonate[®] Calcium Alginate dressing or rope, or an antimicrobial layer, such as Zorflex[®] Wound Contact Layer should be used. The clinician in-charge is responsible for determining if necessary.
- Prescribed compression treatment for venous Leg Ulcer Management can be continued while using SurgiFlex Si Superabsorbent Silicone dressings.
- Each dressing is individually packed, ready for use, and sterilised by ethylene oxide. SurgiFlex Si is single use only and should not be re-sterilised. The dressing is sterile unless the individual package is opened or damaged.

SurgiFlex[®] Si Superabsorbent Silicone Dressings

SurgiFlex Si Superabsorbent Silicone dressing is a combination of a silicone wound and skin contact layer, a superabsorbent polymer core, backed with a transparent polyurethane film outer layer. The addition of a spiral pattern provides conformability and flex across the dressing for added comfort on joints and moving.

SurgiFlex Si Superabsorbent Silicone dressing readily absorbs excess exudate while maintaining a level of moisture across the wound bed with the added benefit of atraumatic removal. The combination of fluid absorption capacities with in-built moisture vapour transmission (MVTR) makes it suitable for the management of wounds with moderate to heavy levels of exudate.

In the presence of moisture, the non-adherent property of the silicone layer of SurgiFlex Si Superabsorbent Silicone dressing prevents adherence to the wound, newly formed tissue and surrounding fragile, or sensitive skin. This ensures dressing changes can take place with minimal tissue disturbance and/or pain. The outer backing of SurgiFlex Si Superabsorbent Silicone dressing is water proof, making activities of daily living, such as showering, easy to accommodate.

DRESSING OPTIONS

REORDER	DRESSING	PADDING	PCS/UNIT
SGF6070	6cm x 7cm	3.5cm x 4.5cm	10
SGF100100	10cm x 10cm	6.5cm x 6.5cm	10
SGF100200	10cm x 20cm	5cm x 15cm	10
SGF100250	10cm x 25cm	5cm x 20cm	10
SGF100300	10cm x 30cm	5cm x 25cm	10
SGF100350	10cm x 35cm	5cm x 30cm	10

BORDERED

EXUDATE



UP TO
HEAVY

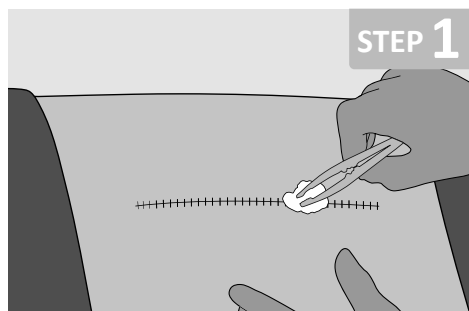
RECOMMEND

3-5
DAYS



EC Representative: Lotus NL B.V. Koningin Julianaplein 10,
1e Verd, 2595AA, The Hague, Netherlands

Manufactured by Shanghai ISO Medical Products Co. Ltd for Sentry Medical Pty Ltd
999 Liuchen Road, Pudong New Area, Shanghai, CHINA



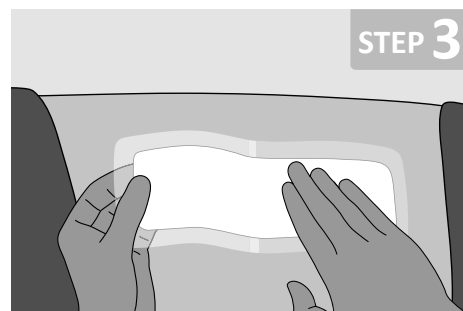
STEP 1

Cleanse the wound thoroughly, using local protocols. The skin surrounding the wound should be clean and dry.



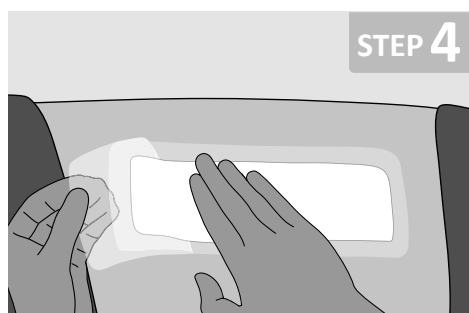
STEP 2

Dressing size is dependent on the wound surface area. The dressing pad edge should extend 2cm beyond the wound margin.



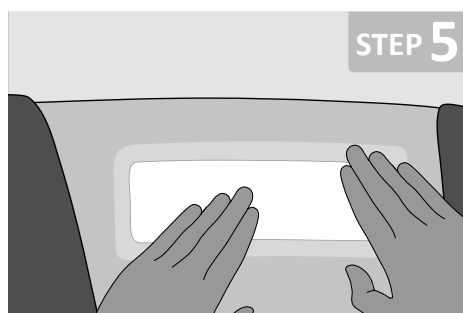
STEP 3

Open the sterile packaging and remove the dressing. Remove one piece of backing film and position it onto the wound.



STEP 4

Remove the remaining piece of backing film while smoothing down the dressing simultaneously.



STEP 5

After covering the wound with the central pad, smooth down the edges of the silicone interfaced border to ensure adherence and create a secure seal.

DRESSING CHANGE

The clinician-in-charge is responsible for determining the need for dressing changes, dependent on the stage and phase of wound healing and exudate level.

The dressing should be changed when exudate absorption is considered to be extending beyond the wound surface area.

7 days is the maximum period between dressing changes.