

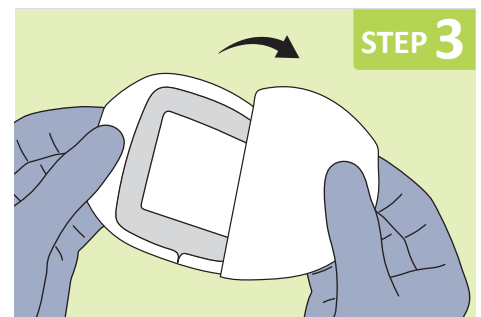
STEP 1

Cleanse wound thoroughly, using local protocols. The skin surrounding the wound should be clean and dry.



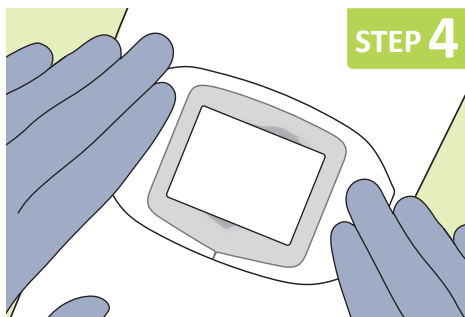
STEP 2

Dressing size is dependent on the wound surface area – the dressing pad should extend 1-2cms beyond the wound margin.



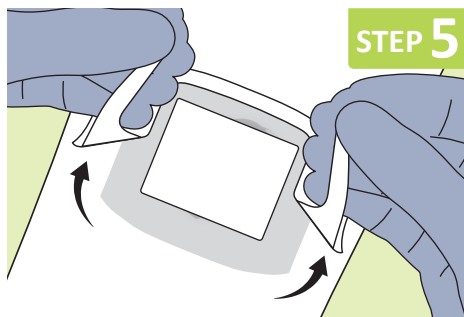
STEP 3

Open the sterile packaging and remove the dressing. Separate the paper backing (marked) from the AsGuard Clear + Film Island Dressing



STEP 4

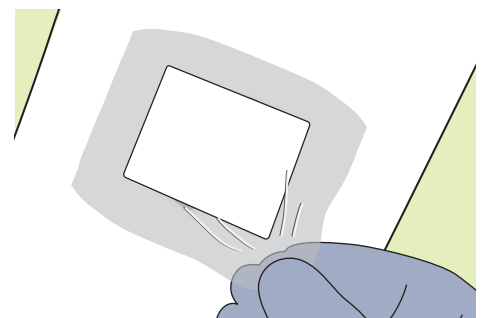
Apply the AsGuard Clear + Film Island Dressing with central pad covering entire wound bed. Apply gentle pressure around the edge of pad.



STEP 5

Peel the window frame / support film away from the dressing. Smooth down the edges of the clear border to create a waterproof and secure seal.

DRESSING CHANGE



The clinician-in-charge is responsible for determining the need for dressing changes, dependent on the stage and phase of wound healing and exudate level.

The dressing should be changed when exudate absorption is considered to be extending beyond the wound surface area.

7 days is the maximum period between dressing changes.

To minimise potential damage to fragile skin, AsGuard Clear + Film Island Dressing should be eased off, using a "stretch and release" technique or an adhesive remover wipe.

INDICATIONS

AsGuard Clear + Film Island Dressings are indicated for use as primary dressings in the management of all types of superficial wounds with light exudate, such as:

- Skin tears
- Post-operative and post-procedural sites
- Abrasions and lacerations
- Blisters and minor skin loss

CONTRAINDICATIONS

Should not be used if allergies to any of its components, is known.

GENERAL INFORMATION

If infection is present, a primary wound cleansing dressing e.g. Osmonate Calcium Alginate dressings or rope, or an antimicrobial layer such as Zorflex should be used in combination with Osmocel Hydroporous Foam. The clinician in-charge is responsible for determining if necessary.