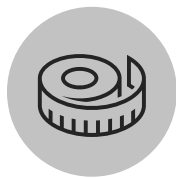
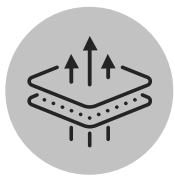


INSTRUCTIONS FOR USE



Various Size Options



Moisture Vapour Permeable



Thermal Insulation

GENERAL INFORMATION

- Prescribed compression treatment for Venous Leg Ulcer Management can be continued while using Osmocel Si Silicone Hydroporous Foam.
- If infection is present, a primary wound cleansing dressing e.g. Osmonate[®] Calcium Alginate dressing or rope, or an antimicrobial layer, such as Zorflex[®] Wound Contact Layer should be used in combination with Osmocel Si Silicone Hydroporous Foam. The clinician in-charge is responsible for determining if necessary.
- No known side effects have been observed or reported in the use of Osmocel Si Silicone Hydroporous Foam dressings.
- Observe for wound infection. Consult the clinician-in-charge if any of the following occurs: fever, increased pain, redness, swelling, abnormal smell or exudate.

DRESSING CHANGE

The clinician-in-charge is responsible for determining the need for dressing changes, dependent on the stage and phase of wound healing and exudate level.

The dressing should be changed when exudate absorption is considered to be extending beyond the wound surface area. 7 days is the maximum period between dressing changes.

Osmocel[®] Si Silicone Hydroporous Foam

Osmocel Si Silicone Hydroporous Foam dressings are multi-layered wound dressings, comprising of a silicone wound and skin contact layer, white polyurethane foam (and superabsorbent polymer layer*) exudate management layer, backed with a skin-toned, polyurethane film support layer.

Osmocel Si Silicone Hydroporous Foam readily absorbs exudate, producing an optimal moist wound healing environment with the added benefit of atraumatic removal. Osmocel Si Silicone Hydroporous Foam has in-built Moisture Vapour Transmission properties, combined with fluid absorption capacities, that make it suitable for the management of wounds with light to moderate levels of exudate.

In the presence of moisture, the non-adherent property of the silicone layer of Osmocel Si Silicone Hydroporous Foam prevents adherence to the wound, newly formed tissue and surrounding fragile, or sensitive skin. This ensures dressing changes can take place with minimal tissue disturbance.

The outer backing of Osmocel Si Silicone Hydroporous Foam Non-Bordered is water resistant. If a waterproof dressing is desired Osmocel Si Silicone Hydroporous Foam Bordered version should be used.

Each dressing is individually packed, ready for use, and sterilised by ethylene oxide. Osmocel Si Silicone Hydroporous Foam dressings are sterile unless the package is opened or damaged, are single use only and should not be re-sterilised.

INDICATIONS

Osmocel Si Silicone Hydroporous Foam dressings are indicated for use as primary dressings in the management of all types of superficial wounds with light to moderate exudate production, such as:

- Skin tears
- Partial thickness burns
- Pressure injuries
- Arterial ulcers
- Venous leg ulcers
- Diabetic ulcers
- Surgical wounds

or as a secondary dressing with other wound contact products, where exposure to conventional adhesive fixation is undesirable.

CONTRAINDICATIONS

- Should not be used if allergies to any of its components is known.
- Not suitable for full thickness burns and wounds before bleeding has ceased.
- Do not simultaneously use Osmocel Si Silicone Hydroporous Foam with an oxidant, e.g hydrogen peroxide or chlorate solution. This may affect the structure and performance of the dressing.

DRESSING OPTIONS

REORDER	DRESSING SIZE	FOAM SIZE	PCS/UNIT	SHAPE
PETAL BORDERED*				
AWS100	7.5cm x 7.5cm	5cm x 5cm	10	
AWS101	10cm x 10cm	6.5cm x 6.5cm	10	
AWS102	15cm x 15cm	12.5cm x 12.5cm	5	
BORDERED*				
AWS002	5cm x 12.5cm	2.5cm x 10cm	5	
AWS003	7.5cm x 7.5cm	5cm x 5cm	10	
AWS004	10cm x 10cm	6.4cm x 6.4cm	10	
AWS005	15cm x 15cm	11.5cm x 11.5cm	5	
AWS006	15cm x 20cm	11.5cm x 16.5cm	5	
AWS007	10cm x 20cm	6.5cm x 16.5cm	5	
AWS008	10cm x 25cm	6.5cm x 21.5cm	5	
AWS009	10cm x 30cm	6.5cm x 26.5cm	5	
LITE BORDERED				
AWS20505	5cm x 5cm	2.5cm x 2.5cm	10	
NON-BORDERED				
AWS050	5cm x 5cm		10	
AWS051	7.5cm x 7.5cm		10	
AWS052	10cm x 10cm		10	
AWS053	15cm x 15cm		10	
AWS054	15cm x 20cm		10	
VARI-SITE NON-BORDERED				
AWS180	12cm x 19cm		5	
VARI-SITE BORDERED*				
AWS182	18.5cm x 24cm	10cm x 13cm	10	
AWS183	23cm x 23.2cm	19cm x 20cm	10	
SACRAL BORDERED*				
AWS150	18cm x 18cm	13.5cm x 12.5cm	5	
AWS151	23cm x 23cm	17.3cm x 16cm	5	
SACRAL BUTTERFLY BORDERED*				
AWS160	18cm x 18cm	13.8cm x 12.6cm	5	
AWS161	23cm x 23cm	19cm x 17.5cm	5	

PETAL BORDERED / BORDERED / LITE BORDERED / NON-BORDERED

STEP 1

Cleanse wound thoroughly, using local protocols. The skin surrounding the wound should be clean and dry.

STEP 2

Dressing size is dependent on the wound surface area – the dressing edge should extend 2 - 3cms beyond the wound margin.

STEP 3

Apply the Osmocel Si Silicone Hydroporous Foam with white silicone interface to the wound.

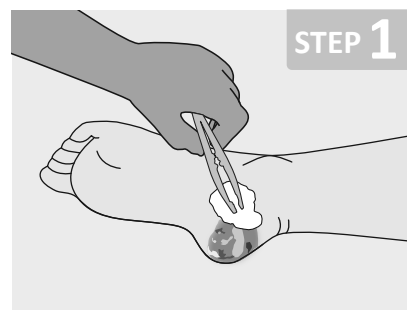
BORDERED

After covering the wound with the central foam pad, smooth down the edges of the silicone interfaced border of Osmocel Si Silicone Hydroporous Foam to create a waterproof and secure seal.

NON-BORDERED

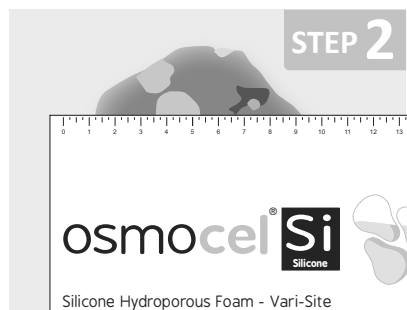
As the Osmocel Si Silicone Hydroporous Foam is self-securing, no further adhesive is required. To lengthen possible wear time, further fixation is suggested, using a flat bandage or tubular bandage, e.g. Medicepe[®] Crepe bandage.

VARI-SITE NON-BORDERED | AWS180



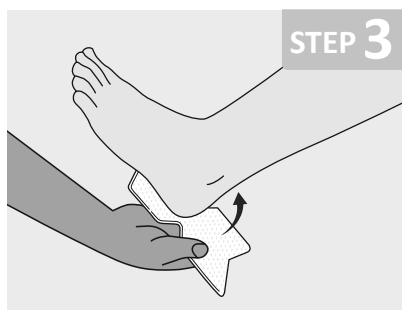
STEP 1

Cleanse wound thoroughly, using local protocols. The skin surrounding the wound should be clean and dry.



STEP 2

Dressing size is dependent on the wound surface area – the dressing edge should extend 2 - 3cms beyond the wound margin.



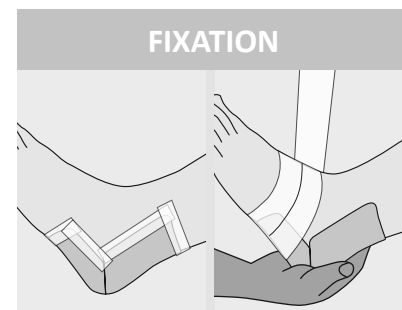
STEP 3

Position the narrowest part of the dressing at the base of the heel. Gently smooth the upper half of the dressing onto the back of the heel and surrounding ankle surface.



STEP 4

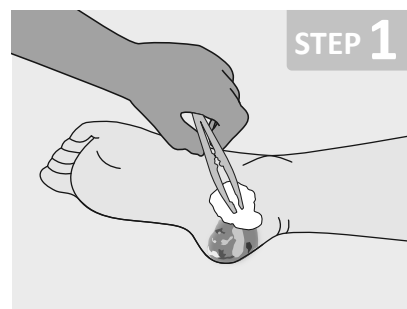
Gently smooth the lower half of the dressing under and around the base of the foot. Ensure the dressing is in contact with the surrounding skin by pressing and smoothing the dressing.



FIXATION

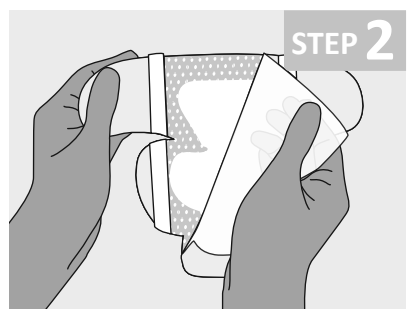
As the Osmocel Si Silicone Hydroporous Foam is self-securing, no further adhesive is required. To lengthen possible wear time, further fixation is suggested, using a flat or tubular bandage, e.g. Medigrepe[®] Crepe bandage, or adhesive fixation e.g. SofSecure[®] Silicone Tape.

VARI-SITE BORDERED | AWS182



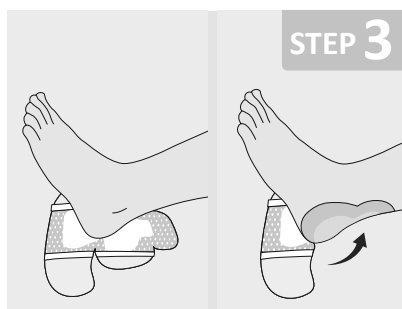
STEP 1

Cleanse wound thoroughly, using local protocols. The skin surrounding the wound should be clean and dry. Dressing size is dependent on the wound surface area – the dressing edge should extend 2 - 3cms beyond the wound margin.



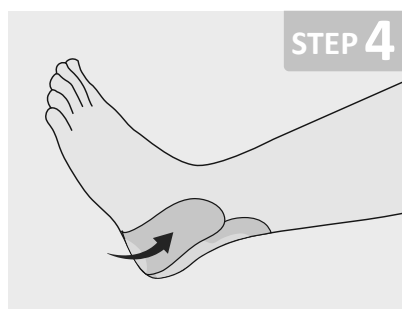
STEP 2

Open sterile packaging and remove the dressing. Remove the centre release film by gently pulling to reveal the middle of the dressing surface.



STEP 3

Position the narrowest part of the dressing pad at the base of the heel. Gently smooth the upper half of the dressing onto the back of the heel and surrounding ankle surface whilst slowly removing the remaining backing film on each side of the upper flaps one at a time. Do not stretch.



STEP 4

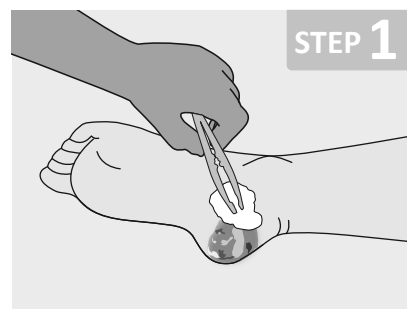
Gently smooth the lower half of the dressing onto the bottom of the foot and up both sides of the ankle whilst slowly removing the backing film on each side of the lower flaps. Do not stretch.



STEP 5

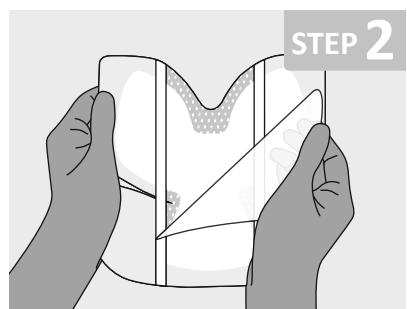
Ensure the dressing is in contact with the surrounding skin by pressing and smoothing the dressing.

VARI-SITE BORDERED | AWS183



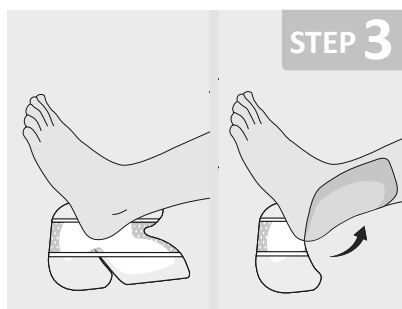
STEP 1

Cleanse wound thoroughly, using local protocols. The skin surrounding the wound should be clean and dry. Dressing size is dependent on the wound surface area – the dressing edge should extend 2 - 3cms beyond the wound margin.



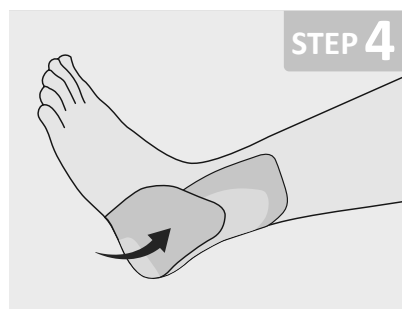
STEP 2

Open sterile packaging and remove the dressing. Remove the centre release film by gently pulling to reveal the middle of the dressing surface.



STEP 3

Position the narrowest part of the dressing pad at the base of the heel. Gently smooth the upper half of the dressing onto the back of the heel and surrounding ankle surface whilst slowly removing the remaining backing film on each side of the upper flaps one at a time. Do not stretch.



STEP 4

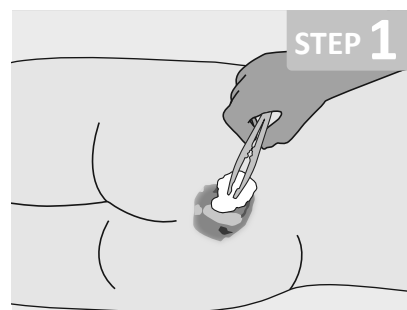
Gently smooth the lower half of the dressing onto the bottom of the foot and up both sides of the ankle whilst slowly removing the backing film on each side of the lower flaps. Do not stretch.



STEP 5

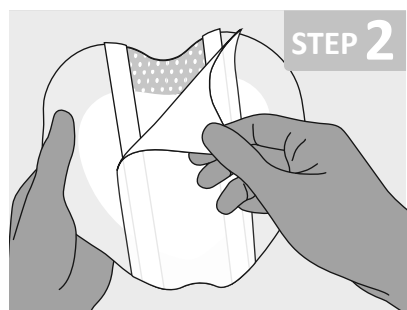
Ensure the dressing is in contact with the surrounding skin by pressing and smoothing the dressing.

SACRAL & SACRAL BUTTERFLY



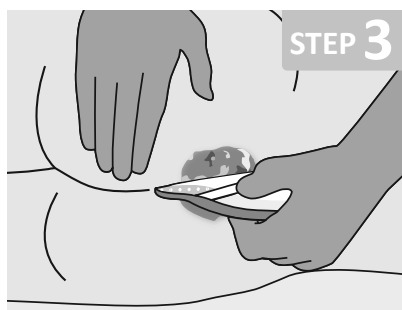
STEP 1

Cleanse wound thoroughly, using local protocols. The skin surrounding the wound should be clean and dry. Dressing size is dependent on the wound surface area – the dressing edge should extend 2 - 3cms beyond the wound margin.



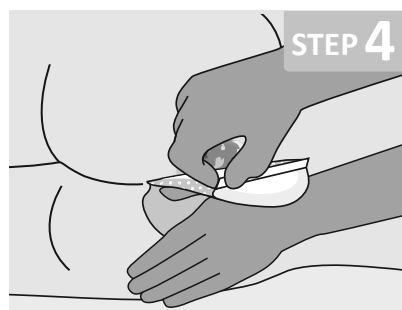
STEP 2

Open sterile packaging and remove the dressing. Remove the centre release film by gently pulling to reveal the middle of the dressing.



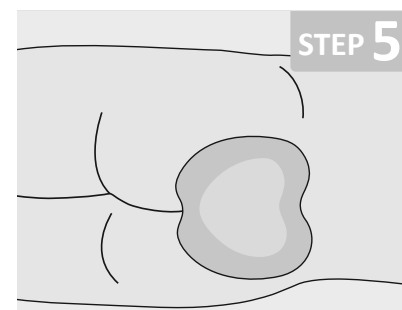
STEP 3

Gently fold the dressing lengthways. Separate the buttocks and place the dressing from the sacral area, with the base of the dressing covering the coccyx.



STEP 4

Gently smooth over surface onto surrounding skin whilst slowly removing the second backing film on each side.



STEP 5

Ensure the dressing is in contact with the surrounding skin by pressing and smoothing the dressing.

Osmocel Si Hydroporous Foam Vari-Site dressings conform to various parts of the body including heel, knee, elbow, underarm, foot, sacrum, neck, breast etc.

EXUDATE	RECOMMEND	EXUDATE	RECOMMEND	EXUDATE	RECOMMEND	EXUDATE	RECOMMEND	EXUDATE	RECOMMEND
UP TO MODERATE	3-5 DAYS	UP TO LIGHT	1-3 DAYS	UP TO LIGHT	3-5 DAYS	UP TO MODERATE	3-5 DAYS	UP TO MODERATE	3-5 DAYS
BORDERED		LITE BORDERED		NON-BORDERED		VARI-SITE		SACRAL / BUTTERFLY	